

# Centra M6063

## Rotary Acuator

### Application

The M6063 actuator is designed to provide floating control in heating and air conditioning systems. High control performance and a robust design are standard for this actuator.

In combination with the valves V5433A, V5433G and V5442A, it is possible to control very exact heating and cooling water temperatures. The mechanical interface between actuator and valve is designed for reliable operation. For a wide range of applications, rotary valves up to DN50 are available.

### Special Features

- Protected against overload and blocking which results in long lifetime
- Maintenance-free electrical actuator for rotary valves
- Clear position indicator
- Direct mounting on Centra rotary valves
- Manual operation possible
- High torque for reliable operation
- Large wiring cabinet for easy electrical installation
- Long lifetime
- 5-year guarantee



### Technical Data

Specifications	
Power supply:	M6063L: 230/240 V AC M6063A: 24 V AC
Power consumption:	3 VA
Protection standard:	IP 44
Angle of rotation:	90°
Insulation class:	II per EN 60730
Ambient operating temperature:	0 to 60 °C
Water temperature in valve:	2 to 110 °C
Max. relative air humidity:	non-condensing
Run time:	100s / 90°
Nominal torque:	7 Nm

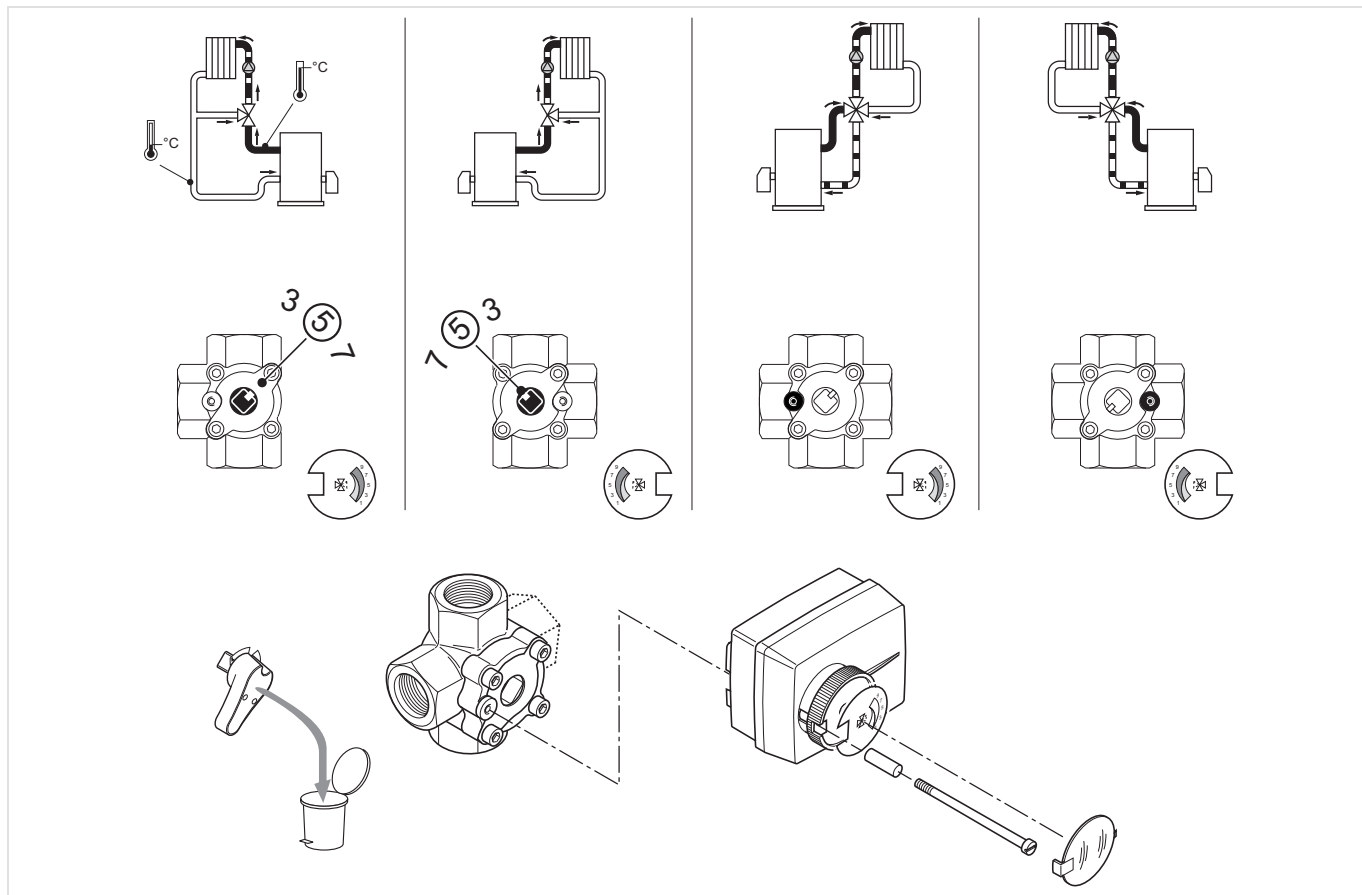
### Method of Operation

The actuator is powered by a synchronous motor. The spindle of the actuator rotates 90°. In the end positions, the motor is switched off by end switches. Manual operation declutches the gear from the valve. As soon as the actuator is powered, the valve is driven by the actuator again. No adjustment necessary. The actuator is maintenance-free.

## Installation Guidelines

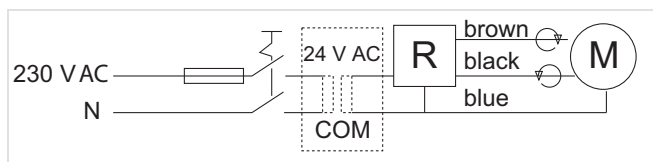
Before mounting the actuator, position the rotary valve according to its installation instruction. The required cross-sectional area of power conductors are according norm minimal 0.75 mm<sup>2</sup>. Recomendated cable type H05VV-F.

### Installation Example



### Electrical Installation

The actuators are prewired.



### Connections

Black and Grey: Switch S1  
(contact opened by end stop left)

Brown and Pink : Switch S2  
(contact opened by end stop right)

Whether to select switch S1 or S2 depends on the mounting position of the rotary valve and the actuator (additional mixing from left or right side).

### Power Supply

Blue: N (COM in case of 24 V AC)

Brown: Clockwise action

Black: Counterclockwise action

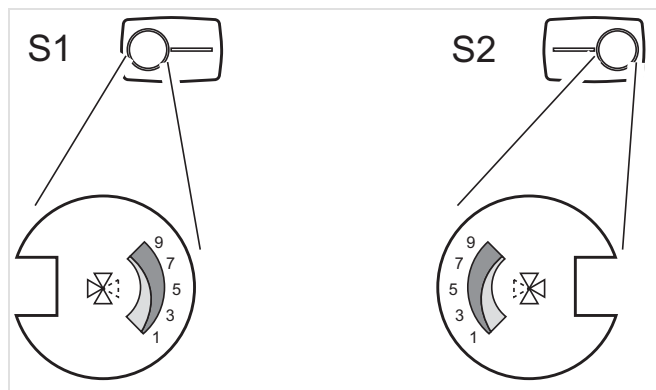
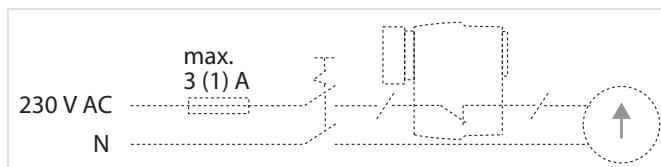
Fuse and switch are to be realized according to country specific instructions!

### Actuator alternative with auxiliary switches

Technical specifications of auxiliary switches:

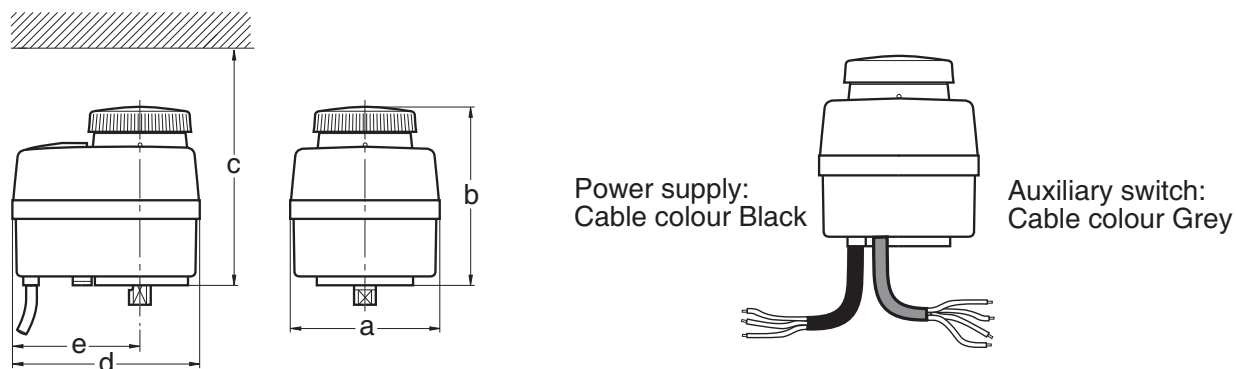
250 V AC, 3 (1) A

Auxiliary switches enable the actuator to switch off external deviceslike circulation pumps, blowers and indicator lights at its mechanical end positions.



## Dimensions

### Overview

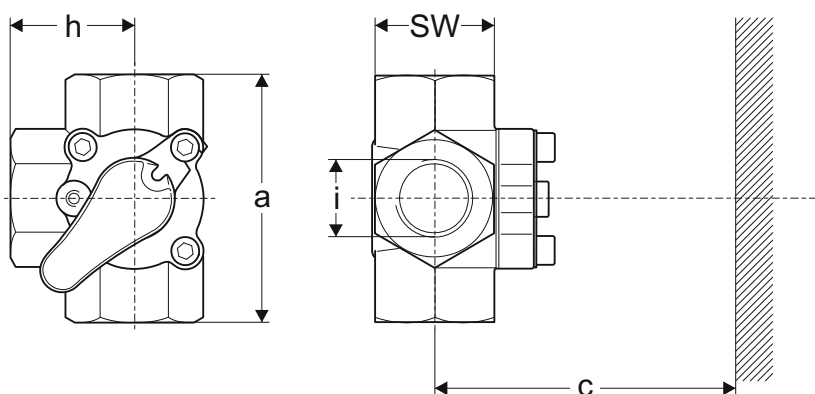


a	b	c	d	e	Item Number
81	97	300	101	69	M6063L/A

Note: All dimensions in mm unless stated otherwise.

### with V5433A

### Overview

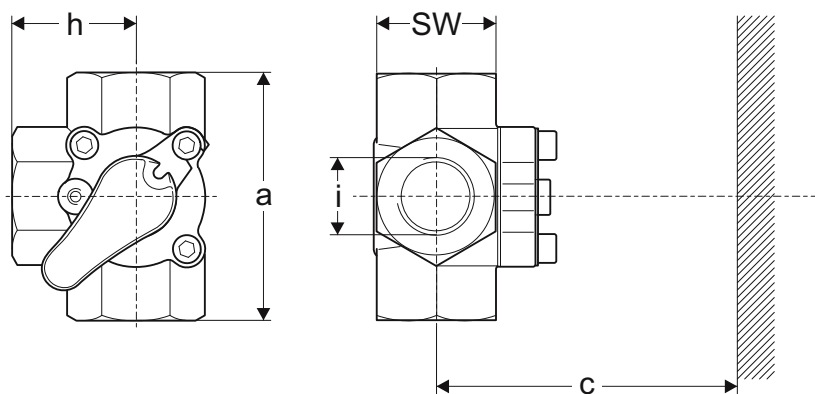


DN	a	c	SW	h	i	Weight	Item Number
20	85	340	41	42.5	R <sup>3</sup> / <sub>4</sub> "	0.9 kg	V5433A1015
20	85	340	41	42.5	R <sup>3</sup> / <sub>4</sub> "	0.9 kg	V5433A1023
20	85	340	41	42.5	R <sup>3</sup> / <sub>4</sub> "	0.9 kg	V5433A1031
25	105	345	46	52.5	R 1"	1.4 kg	V5433A1049
32	105	350	55	52.5	R 1 1/ <sub>4</sub> "	1.9 kg	V5433A1056
40	120	355	65	60.0	R 1 1/ <sub>2</sub> "	3.3 kg	V5433A1064
50	156	365	80	78.0	R 2"	6.1 kg	V5433A1072

Note: All dimensions in mm unless stated otherwise.

## with V5433G

## Overview

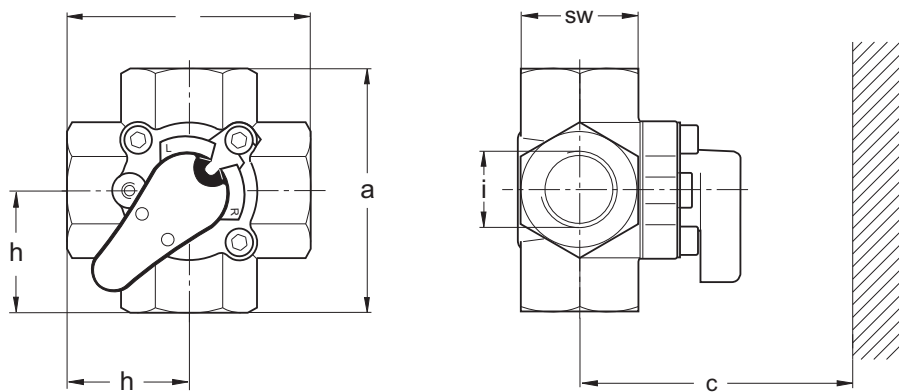


DN	a	c	SW	h	R	Weight	Item Number
20	85	340	41	42.5	$\frac{3}{4}$ "	0.9 kg	V5433G1004
20	85	340	41	42.5	$\frac{3}{4}$ "	0.9 kg	V5433G1012
20	85	340	41	42.5	$\frac{3}{4}$ "	0.9 kg	V5433G1020
25	105	345	46	52.5	1"	1.4 kg	V5433G1038
32	105	350	55	52.5	$1\frac{1}{4}$ "	1.9 kg	V5433G1046
40	120	355	65	60.0	$1\frac{1}{2}$ "	3.3 kg	V5433G1053
50	156	365	80	78.0	2"	6.1 kg	V5433G1061

Note: All dimensions in mm unless stated otherwise.

## with V5442A

## Overview



DN	a	c	h	i	SW	Weight	Item Number
20	85	340	42.5	$R\frac{3}{4}$ "	41	1.0 kg	V5442A1022
20	85	340	42.5	$R\frac{3}{4}$ "	41	1.0 kg	V5442A1030
25	105	345	52.5	$R1$ "	46	1.5 kg	V5442A1048
32	105	350	52.5	$R1\frac{1}{4}$ "	55	2.0 kg	V5442A1055

Note: All dimensions in mm unless stated otherwise.

## Ordering Information

The following tables contain all the information you need to make an order of an item of your choice.  
When ordering, please always state the type, the ordering or the part number.

### Options

Control signal	Auxiliary switch	Weight	Item Number
230/240 V AC floating	-	0.5 kg	M6063L 1009
230/240 V AC floating	250 V AC, 3 (1) A	0.6 kg	M6063L 4003
24 V AC floating	-	0.5 kg	M6063A 1003
24 V AC floating	250 V AC, 3 (1) A	0.6 kg	M6063A 4007

**resideo**

Ademco 1 GmbH, Hardhofweg 40,  
74821 MOSBACH, GERMANY  
Phone: +49 6261 810

Manufactured for and on behalf of  
Pittway Sàrl, Z.A., La Pièce 6,  
1180 Rolle, Switzerland

Subject to change. EN0H-1726GE23 R1223  
© 2020 Resideo Technologies, Inc.  
All rights reserved.

**For more information**  
[resideo.com](https://resideo.com)

This document contains proprietary information of Pittway Sàrl and its affiliated companies and is protected by copyright and other international laws. Reproduction or improper use without specific written authorization of Pittway Sàrl is strictly forbidden.